



2018



# *Little Rock Lake* *Zipline*

---

A GREAT  
ADVENTURE  
FOR ALL AGES  
IN SOUTHERN  
SWEDEN  
HIGHLANDS

---

FREE PARKING  
AND FREE ENTRY  
TO THE PARK



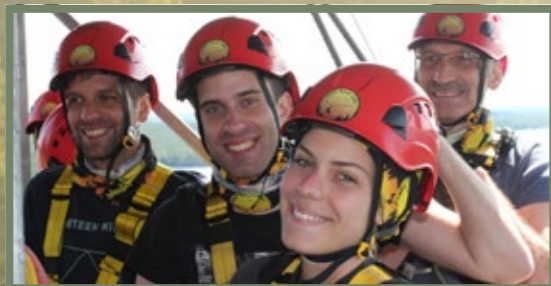
# WELCOME TO EUROPE'S LONGEST ZIPLINE – IN SMÅLAND!



**16** | **4 KM**  
STATIONS | LINE THROUGH THE DEEP FOREST

**5–99** YEARS  
OLD

TAKE A DEEP BREATH, TAKE COURAGE AND LET YOU FLY LIKE A BIRD.  
WRITE A NEW CHAPTER IN YOUR LIFE. A GREAT ADVENTURE FOR ALL AGES.



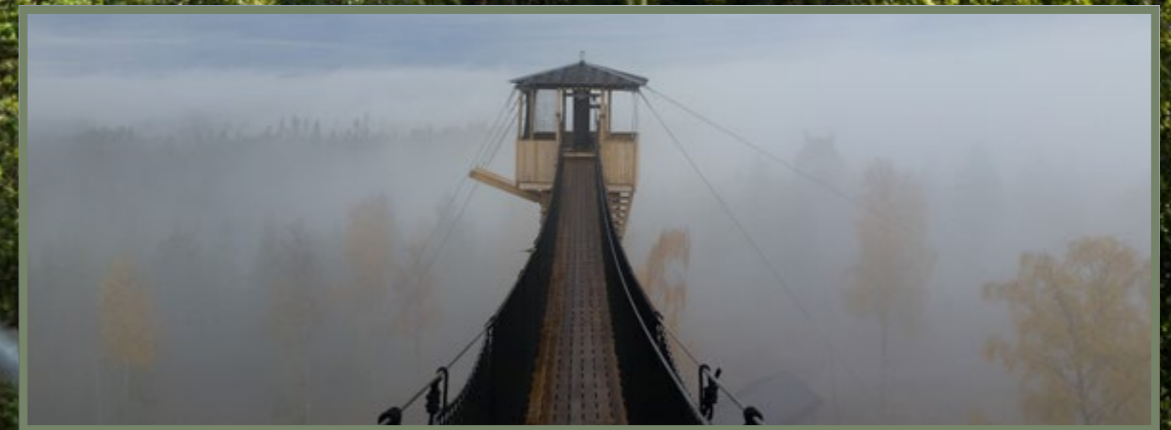
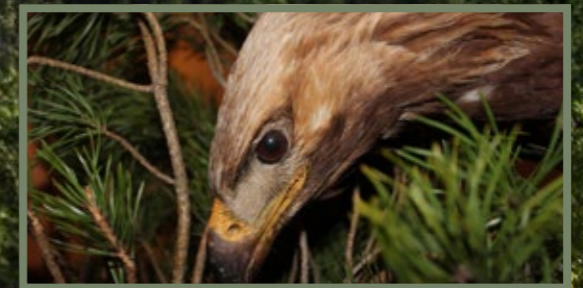
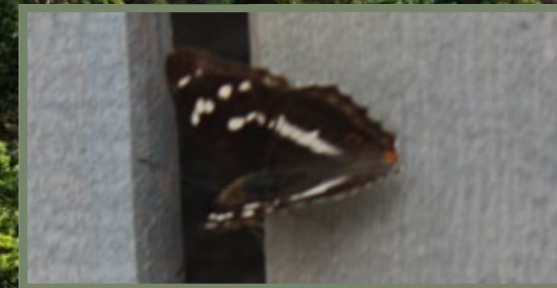
25M  
LONG SUSPENSION BRIDGE

20M  
ABOVE THE GROUND



# FANTASTIC VIEW!

FROM OUR OBSERVATION TOWER YOU GET A FANTASTIC VIEW. THE SURROUNDING NATURE ARE RICH IN FOREST BIRDS AND IN OUR FOREST THE GOLDEN EAGLE LIVE AND ALMOST EVERY DAY WE CAN SEE THE EAGLE SAILING HIGH ABOVE BASE CAMP. THE RARE LIMENITIS CAMILLA CAN BE SEEN SOME TIMES.



## RESTAURANT

Our restaurant Fine Forest is open daily between July-August and we servers different meals from forest and lakes.



## GRILL

We have public grill areas that can be reserve.



## CAMPING

It is possible to camp in Base Camp and there you have access to toilet and shower.

We rent out tent, air mattress, slepping blanket and pillow with pillow case.

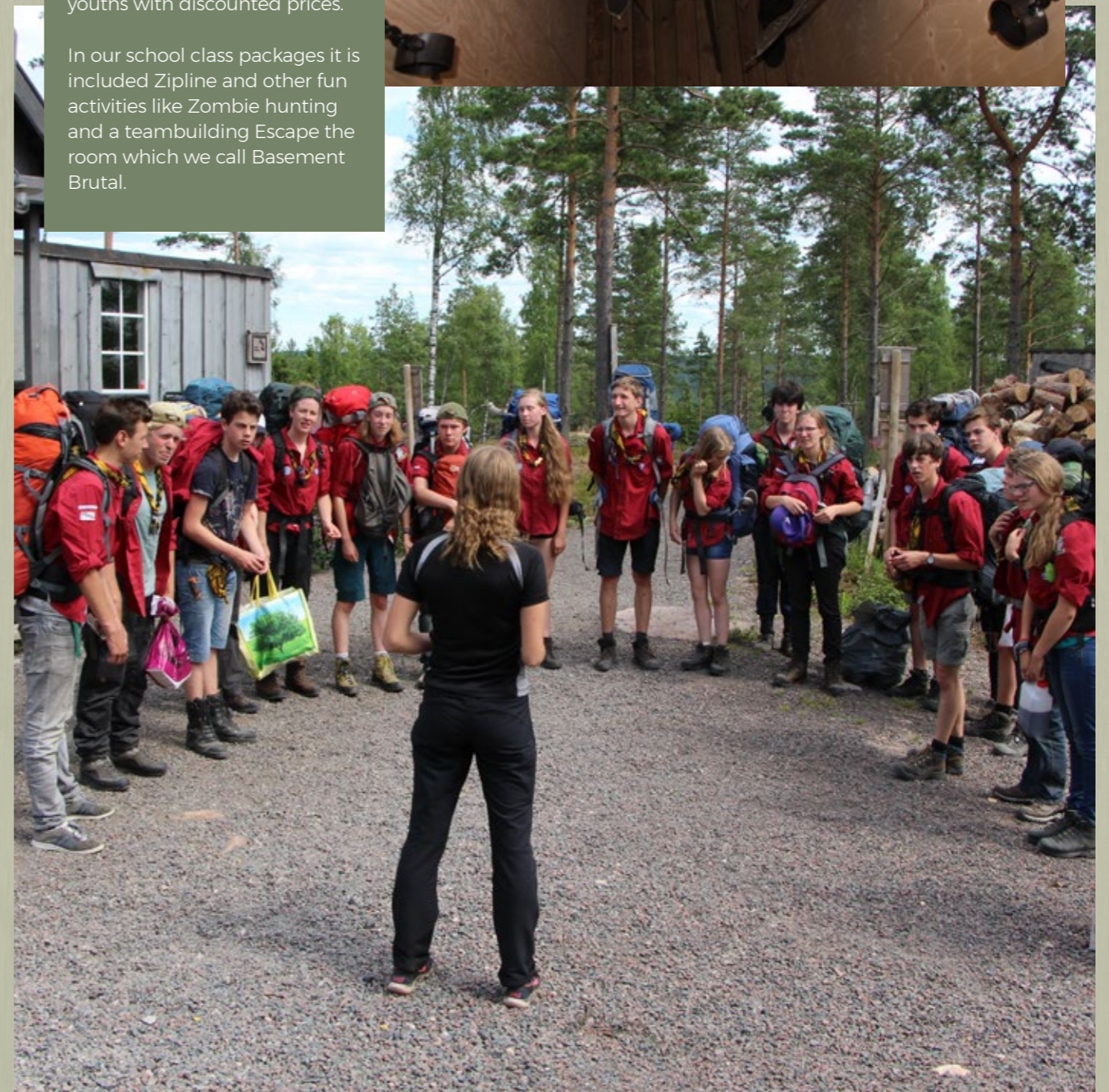


## SCHOOL CLASSES, GIRLS AND BOY SCOUTS

We welcome school classes, girls and boys scouts welcome for adventure.

We have several packages for youths with discounted prices.

In our school class packages it is included Zipline and other fun activities like Zombie hunting and a teambuilding Escape the room which we call Basement Brutal.



## HEN-STAG PARTIES

We have a special packages for hen-stag parties with Zipline and also hot tub, food and drinking packages.

We help you arrange pranks.



## TEAMBUILDING

We offer pedagogical and challenging teambuilding.



# 2018

# Little Rock Lake

[www.littlerocklake.com](http://www.littlerocklake.com)

57° 10' 41.85°N

15° 8' 15.72°O

X 6339282      Decimal

Y 1459418      57.1778

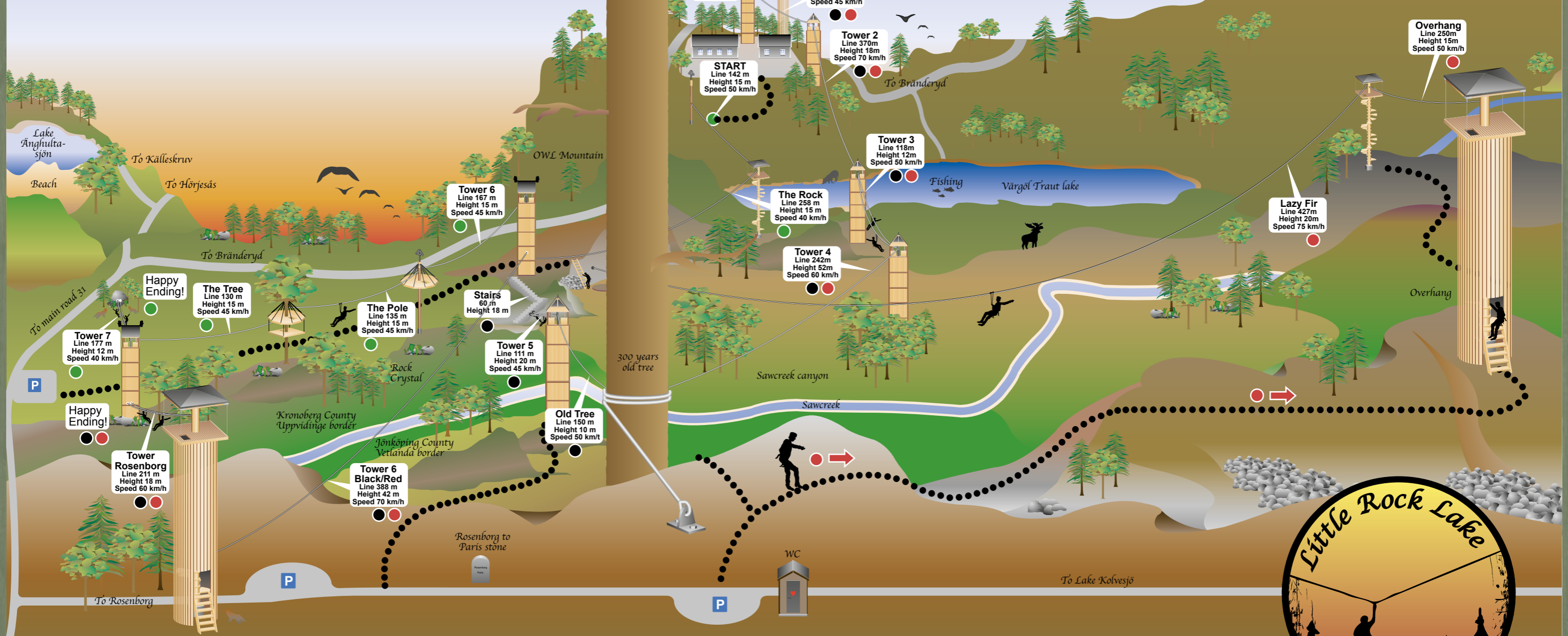
15.1342

**Green-Blue Zip**  
1009 m / inc. 1 dubbelines 1186 m  
6 stations

**Black Zip**  
1684 m / inc. 3 dubbelines 2155m  
8 stations

**Kamikaze Zip**  
2100 m / inc. 2 dubbelines 2610m  
8 stations

Total lines in forest: 4018 m  
The Green-Blue zip family friendly

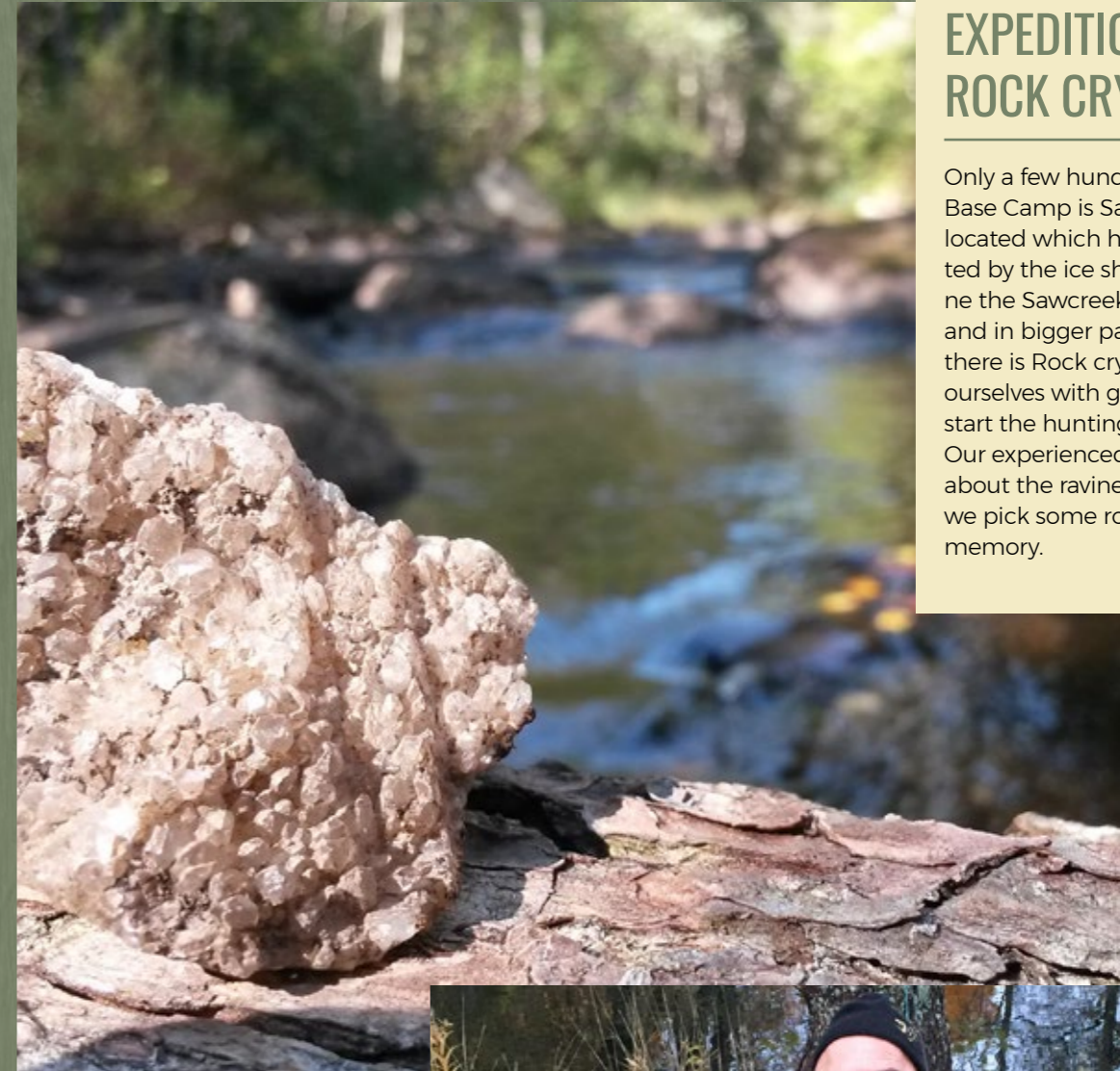


# SOFT ADVENTURE

AS AN ALTERNATIVE TO ZIPLINE WE HAVE SEVERAL SOFT ADVENTURE

## EXPEDITION GETARYGGARNA

The preserve Getaryggarna is located close to Base Camp and here we offer a 3-4 hours guided forest walk in an untouched pine tree dominated forest. The adventure can be added outdoor cooking and abseiling down a 20 meters mountain wall. We also look in a loupe at lichen and moss which let us see a new world that many people do not know exist.



## EXPEDITION ROCK CRYSTAL

Only a few hundred meter from Base Camp is Sawcreek canyon located which have been created by the ice sheet. In this ravine the Sawcreek River streams and in bigger parts of the ravine there is Rock crystal. We equip ourselves with geohammer and start the hunting for crystals. Our experienced guide tell about the ravines birth and we pick some rock crystal for memory.

## FISH DINING

Our pond in Base Camp are full of 1-2 kg salmon which we take up and cook. A great fish lunch with boiled potato and primeur and a cold sauce which you make by yourselves taste much better than anything else.



Photo: Kronobergs sportfiske

## WILDERNESS DECK

Our wilderness deck are over 1000 sq. m. and are a meeting point in Base Camp. Here we have hot tub, sauna, WC, dressing room and hot water shower. We have a double cabin which is suits for 12+12 sleeping persons. The double cabin have a soft mattress floor and air condition with heat and cold. Half of the wilderness is public which means that you can bring your own food and drinks on a part of the deck.



## MOUNTAIN POOL & MULTISPORT COURSE

Our mountain pool is 6 meters deep and the water comes mainly from the mountain ground which fill up the water for us. There is also several challenging workout obstacles around the mountain pool, most of them over water that requires both endurance, strength and technique. We have two high hanged ropes where you can swing from the edge into the water. There is 3-5 and 11 meters diving platforms for diving. The water can some part of the year be cold, so we do rent out wetsuit and wetsuit shoes.



## WORLD'S UNIQUE WATER FILLED UNDERGROUND LABYRINTH

Under bigger part of our wilderness deck we have a labyrinth. This labyrinth is a very advanced underground course which is 90 % water filled. To get around the over 200 meters long undergrounds course, it is necessary to cross squat and crawling through narrow and wet passages and there is water trap on several places in the

labyrinth which must be crossed. This is a challenge for those who like that little extra and we do not recommend the labyrinth for those who is not really used to water activities.

The labyrinth is only open for booking by multisporters together with our placed safety staffs.



# WORTH TO VISIT

CLOSE TO BASE CAMP THERE IS A SEVERAL PLACES WORTH TO VISIT

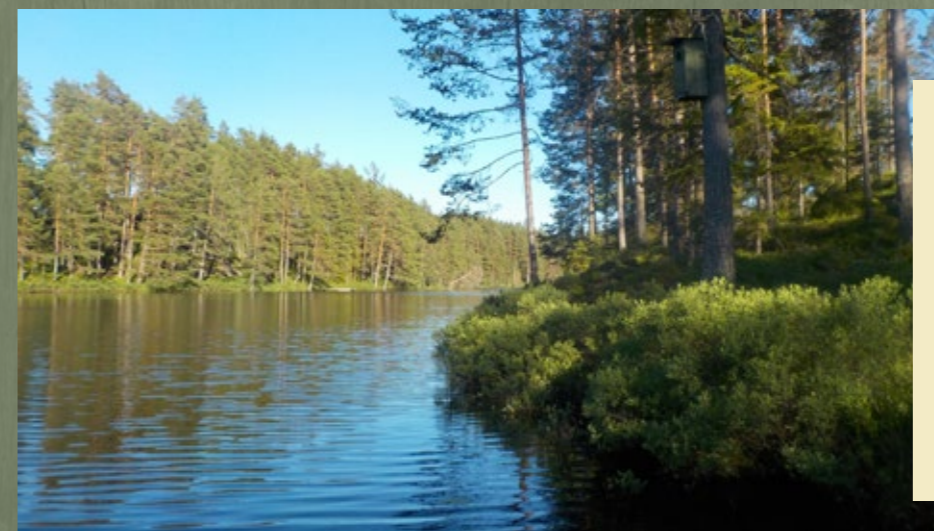
## KÄLLESKRUVSGÖL

Källeskruvsgöl is located south of Base Camp and are a small source water with a beautiful walk path around the water. In this water you also can fishing for salmon and fishing card is required.



## VÄRGÖL

A beautiful water just a few hundred meters from Base Camp. Here is also salmon and fishing card is required. There is a walking path around the lake which takes approx. 20 minutes to walk around.



## LIBBHULTS ÄNGAR

A nature reserve approx. 10 km from Base Camp. A beautiful leaf forest area with an oak forest and meadow land which is several hundred years old.





A THRILLING EXPERIENCE  
AND A GREAT COMMUNITY IN  
AN UNIQUE ENVIRONMENT!



FOLLOW US



@swedenzipline  
#swedenzipline

BOOK AT SWEDENZIPLINE.COM

**LITTLE ROCK LAKE ZIPLINE**

Bränderydsvägen Base Camp | Exit Mainroad 31 | 360 72 KLAVRESTRÖM | Tel +46 470-54 29 00